



Project:	Type:
Prepared By:	Date:

Driver Info		LED Info	
Type	Constant Current	Watts	24/19/15W
120V	.22A	Color Temp	3000K/3500K/4000K/5000K
208V	.12A	Color Accuracy	90 CRI
240V	.11A	L70 Lifespan	50,000 Hours
277V	.09A	Lumens	2000/1600/1200 lm
Input Watts	24/19/15W	Efficacy	83/84/80 lm/W

Technical Specifications

Performance

Product Type:

Commercial Downlight

Description:

Wattage and CCT selectable commercial downlights for new construction and retrofit applications.

Wattage Equivalency:

27/23/15W CFL

Input Wattage:

24/19/15W

Lumens:

24W: 3000K @ 2,000lm; 3500K @ 2,060lm; 4000K @ 2,060lm; 5000K @ 2,030lm
 19W: 3000K @ 1,600lm; 3500K @ 1,640lm; 4000K @ 1,640lm; 5000K @ 1,620lm
 15W: 3000K @ 1,200lm; 3500K @ 1,240lm; 4000K @ 1,240lm; 5000K @ 1,220lm

Efficacy:

24W: 3000K @ 83lm/W; 3500K @ 86lm/W; 4000K @ 86lm/W; 5000K @ 85lm/W
 19W: 3000K @ 84lm/W; 3500K @ 86lm/W; 4000K @ 86lm/W; 5000K @ 85lm/W
 15W: 3000K @ 80lm/W; 3500K @ 83lm/W; 4000K @ 83lm/W; 5000K @ 81lm/W

L70 Lifespan:

50,000-Hour LED lifespan based on IES LM-70 results

Electrical

Driver:

Constant Current, Class 2, 60 Hz, 120V-277V, 120V: 0.22A, 277V: 0.09A

Dimming Driver:

Driver includes dimming control wiring for 0-10V dimming systems. Requires separate 0-10V DC dimming circuit. Dims down to 10%.

THD:

≤20%

Power Factor:

≥0.9

Dimmable:

Yes, 0-10V dims down to 10%. See Dimmer Compatibility List.

Input Voltage:

120-277V

Operating Frequency:

50/60Hz

Input Current @ 120V (mA):

218mA

Input Current @ 208V (mA):

120mA

Input Current @ 240V (mA):

105mA

Input Current @ 277V (mA):

93mA

Operating Temperature:

-4°F to 104°F (-20°C to 40°C)

Flicker:

≤30%

Color Temperature:

Field Adjustable via dip switch
 3000/3500/4000/5000K

LED Characteristics

Color Accuracy (CRI):

>90 CRI

R9 Value:

High color performance with R9 greater than or equal to 50

Technical Specifications (continued)**Color Consistency:**

4-step MacAdam Ellipse binning to achieve consistent fixture-to-fixture color

Color Stability:

LED color temperature is warrantied to shift no more than 200K in color temperature over a 5-year period

Color Uniformity:

RAB's range of Correlated Color Temperature follows the guidelines of the American National Standard for Specifications for the Chromaticity of Solid State Lighting (SSL) Products, ANSI C78.377-2017.

Installation**Mounting:**

Recessed

Construction**Size:**

6"

Shape:

Round

Finish:

White

Enclosure Material:

Metal

Trim Style:

Smooth

Lens:

Polycarbonate light diffuser distributes light evenly and smoothly for general lighting applications

Cut Out Template Size:

6 5/16"

Compliance**Listings:**

UL Listed, UL Classified

Environment:

Suitable for use in dry, damp, and wet environments.

IC Rated:

No

Air Tight:

Housing certified Air Tight as per ASTM E283

Energy Star Approved:

This product is ENERGY STAR® Version 2.2 Certified.

Energy Star ID:

2389589

DLC Listed:

No.

There is no product category on the Design Lights Consortium (DLC) Qualified Products List for this lamp to qualify under.

Certification Model Number:

DLC0055(CRLEDFA-6R-24S-9CCT-UNV-WS)

T20 Compliant:

Not compliant

California Title 24 JA8 Compliant:

Can be used to conform with the requirements of California Title 24 Part 6

California Energy Commission (CEC) Status:

Lawful for Sales in California

NEC Compliant:

Suitable for use in closets. Compliant with NEC Sec. 410.16 (A)(1) and 410.16 (C3).

IESNA LM-79 & LM-80 Testing:

RAB LED luminaires and LED components have been tested by an independent laboratory in accordance with IESNA LM-79 and LM-80.

RoHS:

Mercury and UV free. RoHS-compliant components.

FCC:

Complies with Part 15 of the FCC Rules

Other**Accessories:**

[DLPLATE/C3468R/NB](#)

[DLPLATE/WFR3468/NB](#)

Mounting Plate w/nailer bar

[DL6-8GOOF/R/P/CRLEDFA](#)

Commercial Downlight 6"-8" Goof Ring

[DLTRIM/CRLEDFA6R-BNS](#)

6" Smooth Brushed Nickel Color Trim

[DLTRIM/CRLEDFA6R-BRS](#)

6" Smooth Bronze Color Trim

[DLTRIM/CRLEDFA6R-BS](#)

6" Smooth Black Color Trim

[DRI-21-EMGR-DC-D10](#)

Emergency backup driver

Warranty:

RAB warrants that our LED products will be free from defects in materials and workmanship for a period of five (5) years from the date of delivery to the end user, including coverage of light output, color stability, driver performance and fixture finish. RAB's warranty is subject to all terms and conditions found at rablighting.com/warranty.

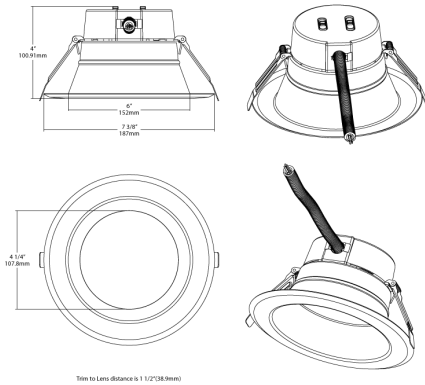
Note:

All values are typical (tolerance +/- 10%)

Buy American Act Compliance:

RAB values USA manufacturing! Upon request, RAB may be able to manufacture this product to be compliant with the Buy American Act (BAA). Please contact customer service to request a quote for the product to be made BAA compliant.

Dimensions



Features

- Mounts directly into ceiling, no housing required
- Field-adjustable "set and forget" color temperature
- High-performance LEDs for commercial applications
- Meets air-tight requirements
- 0-10V dimming, see Dimmer Compatibility List
- Suitable for wet and damp locations
- Replacement for traditional compact fluorescent recessed downlights

Ordering Matrix

Family	Size	Shape	Wattage	CRI/Color Temp	Voltage/Dimming	Finish	Trim	Battery Backup
CRLEDFA	6	R	24S	9CCT	UNV	W	S	
	4 = 4" 6 = 6" 8 = 8" 10 = 10"	R = Round	12S = 12/9/7W Adjustable 16S = 16/12/9W Adjustable 22S = 22/16/11W Adjustable 24S = 24/19/15W Adjustable 33S = 33/29/25W Adjustable 43S = 43/37/32W Adjustable	9CCT = 90 CRI, 3000K/3500K/4000K/5000K Adjustable	UNV = 120-277V, 0-10V Dimming	W = White	S = Smooth	Blank = No Battery Backup /E = Battery Backup